



ubimex-a

AFTN System

www.ubitech.com

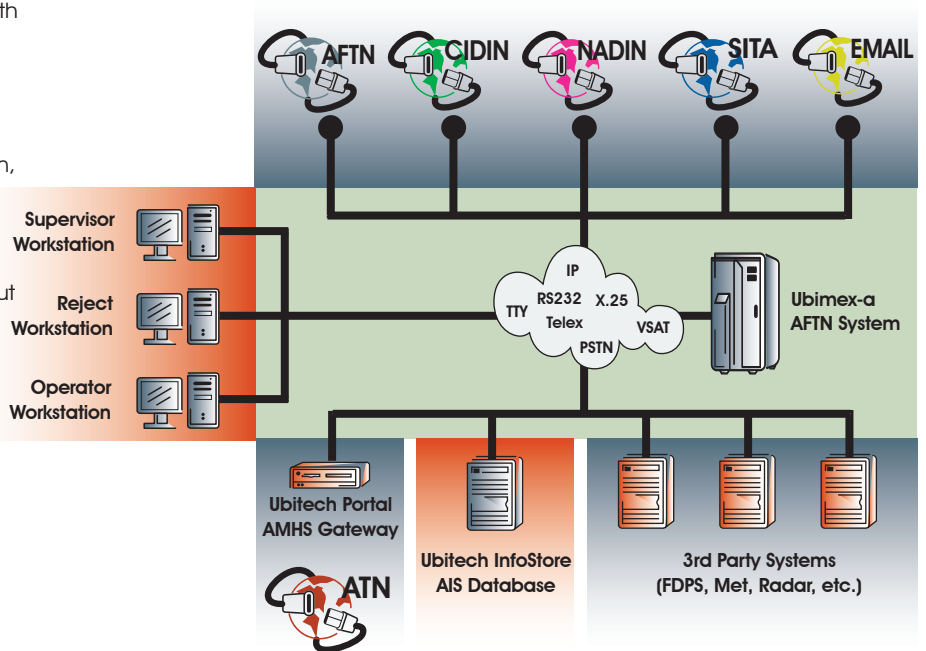


+ PROVEN TECHNOLOGY...PERFECTED FUNCTIONALITY

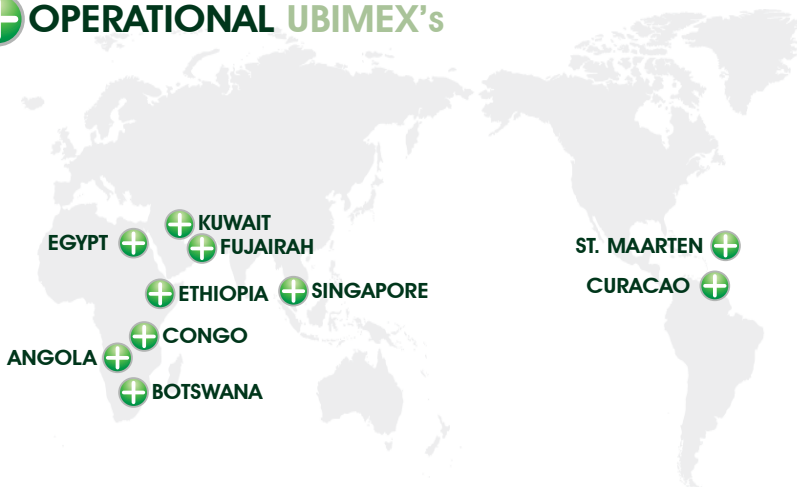
20 years of continuous development has made the 5th generation **Ubimex-a** the pinnacle of AFTN Systems. Over these years, no AFTN system can match the **Ubimex-a's** reliability record of continuous operation and never losing a message.

The **Ubimex-a** is not only the most reliable AFTN System, it is the most feature-rich.

- 100% ICAO Annex 10 Compliant
- Integration with 3rd Party Systems (FDPS, Met, etc.)
- High Performance Message Processing + Throughput
- Message Validation & Error Correction
- Unlimited Online Message Archive
- Powerful Search & Retrieval Utilities
- Local & Remote Workstations
- Control & Monitoring Facility
- Available AMHS & Email Gateways
- Connectivity to all Circuit Types
 - IP
 - X.25 & Frame Relay
 - CIDIN/NADIN
 - PSTN/Fax
 - Telex/TTY
 - Synchronous & Asynchronous Serial



+ OPERATIONAL UBIMEX's



+ ATN MIGRATION MADE EASY

The **Ubimex-a** takes the risk and cost out of migrating to ATN. All that is required to add X.400 messaging to the Ubimex-a is the simple addition of the **Ubitech Portal AMHS Gateway**.

For many customers, using an AMHS Gateway in conjunction with the **Ubimex-a** is the best approach to ATN Migration:

- Reduces risk by leveraging the proven reliability of the **Ubimex-a** AFTN System.
- More economical than purchasing, installing, & testing a new AMHS system.
- Requires only the addition of a networked peripheral device.
- The **Ubimex-a** is preconfigured to support the addition of an AMHS Gateway.

+ ADVANCED ARCHITECTURE

The **Ubimex-a** is the most innovative AFTN System available today.

- COTS components
- Modular & independent design
- Unlimited expandability of circuits and workstation quantities
- Flexibility to support all circuit types and protocols
- 99.9998% availability rating
- Throughput of 50 messages per second
- Processing in < 10ms per message

The **Ubimex-a**'s deployed in Singapore and Egypt are world's largest AFTN systems; Each processes over 100,000 messages per day.

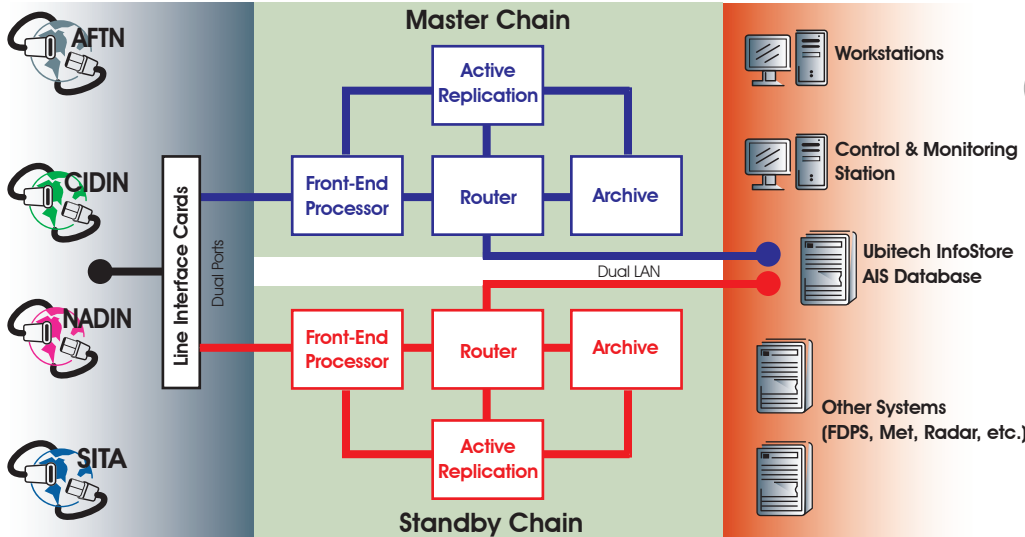
Ubitech uses exclusive technology to achieve a higher level of redundancy.

- Master/Standby server configurations with an automatic switchover mechanism
- Dual-port line cards that simultaneously transmit incoming messages to both the Master and Standby servers
- Dual-Chain architecture to ensure that a message is never lost
- Active Replication monitors each software process, detects abnormalities, and restarts processes experiencing problems without loss of data
- 2 to 'n' server replication

ubimex-a

AFTN System

www.ubitech.com



+ LINE INTERFACE CARDS

Ubitech line interface cards are designed specifically for use with the AFTN network.

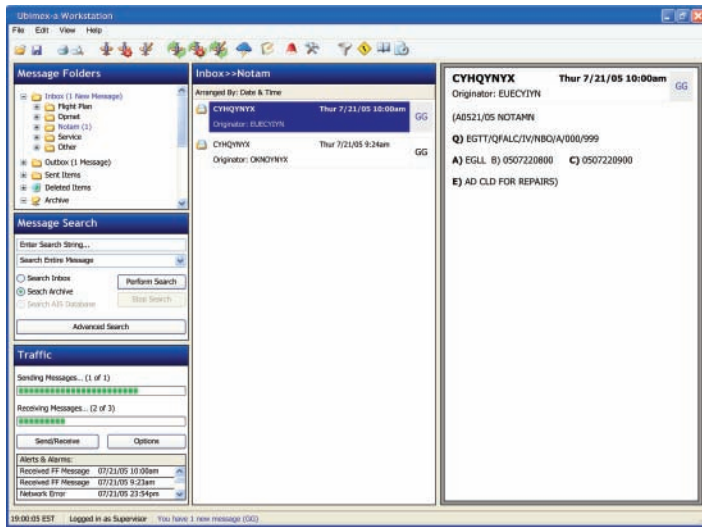
- Digital or Analog Interfaces
- Dual-ports for added redundancy
- Rack-mountable and hot-swappable
- Redundant power supplies
- Embedded protocols:
 - X.25
 - CIDIN
 - NADIN
 - COP
 - Telex/TTY
 - PSTN & Fax



+ POWERFUL WORKSTATIONS

The **Ubimex-a** Workstation application has been developed with extensive consultation with the end user to maximize the efficiency and ease of operations.

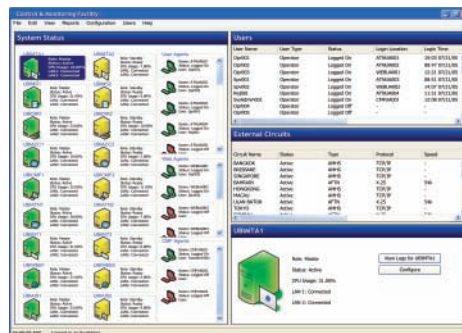
- Minimal user interaction (mouse clicks or key strokes)
- Message creation, reception, & transmission
- Predefined message templates for:
 - AFTN
 - NOTAM, SNOWTAM, WINDTAM, BIRDTAM, ASHTAM, ICAO 5-digit, & 'Z' Series
 - METAR, TAF, SIGMET, SPECI, SYNOPSIS, & ARFOR
 - FPL, RPL, CHG, DLA, CNL, ARR, & DEP
 - SVC
 - Free Form
- Windows based application
- Mono & Flex Term Configuration
- Auto functions for SPV, SVC, etc.
- Local or Remote connectivity
- Account based functionality (SPV, REJ, OPR, MNT, etc.)
- Maintenance Shelf for system control & monitoring
- Syntax & Semantic validation
- Online Traffic Analysis
- Error Correction
- Archive search facility
- Audible & Visual alarms
- Integrated with Ubitech InfoStore



+ SYSTEM MONITORING

The Control & Monitoring Facility is an optional component of the Ubimex-a that can provide system administrators with a powerful tool to control and monitor the entire **Ubimex-a** nexus.

- User management
- Configuration of all system components
- Real-time status reports
- Performance measurement
- Statistic and report generation



ubitech
inspire change.

Tel: +1 (613) 591-0500

Fax: +1 (613) 591-0981

sales@ubitech.com

www.ubitech.com